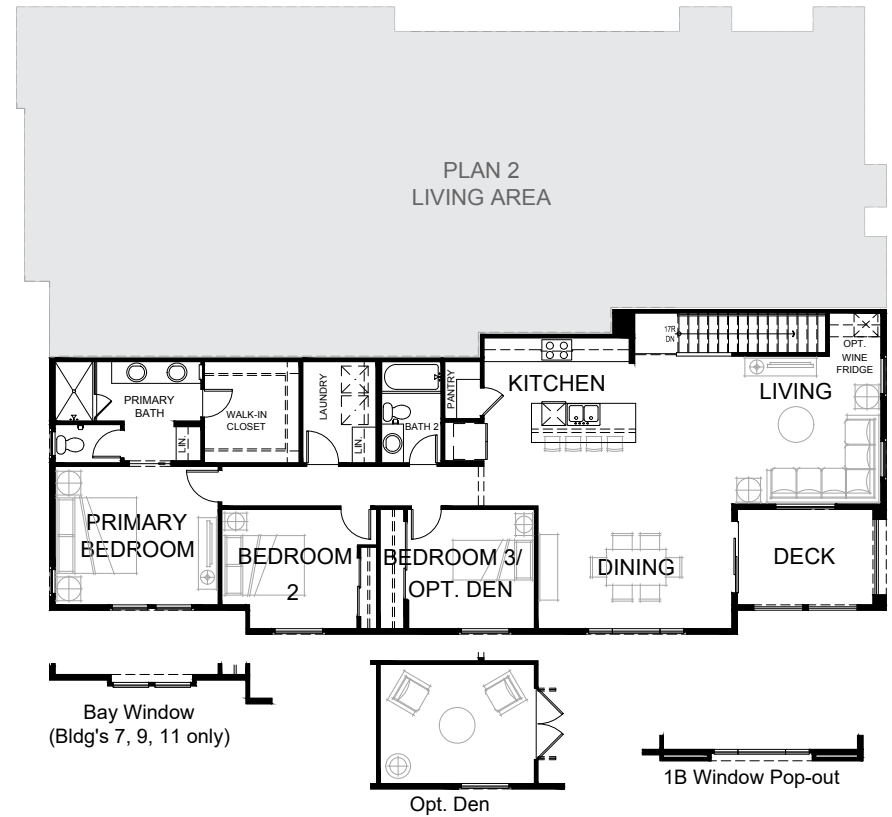
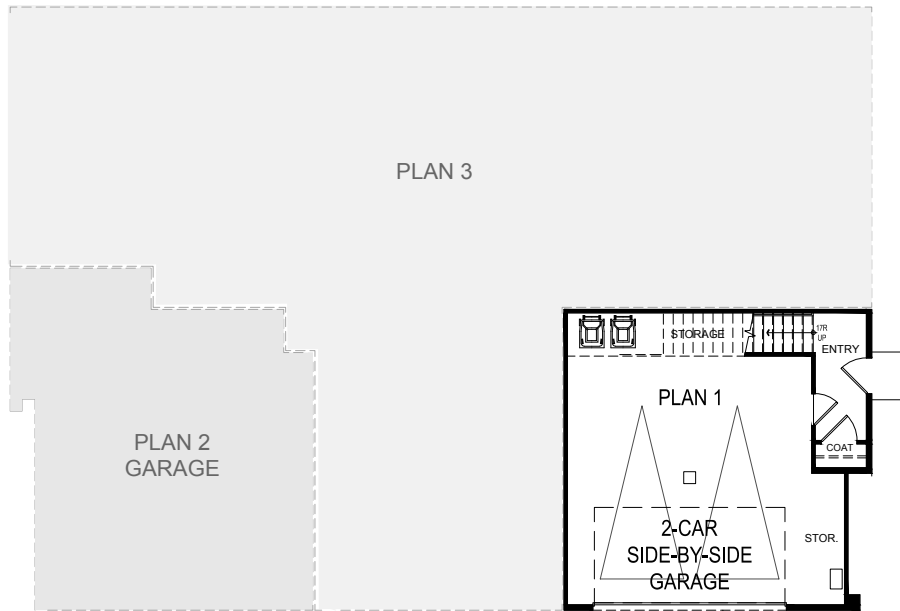




**PLAN 1A/1B, The Carriage House**

3 Bed  
 2 Bath  
 1,650 sq ft  
 2-car Side-by-side Garage



FIRST FLOOR

SECOND FLOOR

**Village Walk by Olson Homes | 15716 Tetley Street, Hacienda Heights, CA 91745 | (562) 370-9513 | village@theolsonco.com | VillageWalkHome.com**

Floorplans and renderings are artist's conception based on preliminary information. Some homesites may be pre-plotted for specific variations or options. Please consult your Home Advisor for details. In an effort to improve our homes, Olson Homes reserves the right to change features, prices or plans without notice. Windows, doors, porches, patios and decks vary per elevation and per homesite location. Floorplan measurements are approximate. Prices and availability are subject to change without notice. DRE #01877641. CSLB #939166 Olson Urban Housing, L.P. ©2023 Olson Homes and Village Walk™.